

The Audi A4



When past inspiration and future technology come together



**Introducing
the Audi A4**



Progressive design

The powerful looking front end, the three-dimensional single frame and the sporty elegant design.



Hear the engine roar with breathtaking performance with a selection of two different TFSI engines, while enjoying lower fuel consumption



Fitted with the Audi A4 is the Matrix LED headlights with dynamic light design and rear combination lamps with dynamic turn signal which casts a bright uniform light across the road.



With quattro and ultra technology on board, the driving experience is further enhanced as it offers exceptional versatility and handling. So that you know, you're always in control.



quattro All Wheel Drive
with ultra technology



Functional interior

Its 12.3-inch display directly in front of you displays important functions clearly and in full HD resolution, including speed and RPM.


With the MMI navigation plus with MMI touch you can use a large part of the range of Audi connect. It gives you access to helpful digital services in the areas of infotainment, navigation, security and service.


and generously
spaced


In the interior of the Audi A4 Sedan, you will experience a generous amount of space and an arrangement of the interior elements which is designed to maximize brightness and space.

State of the art driving assistance

While driving your Audi A4, let the driving assistance help you from parking to monitoring your driving conditions so that you arrive at your destination relaxed and safe.

 Matrix LED

 360 degree camera

 Rear Cross Traffic Assist

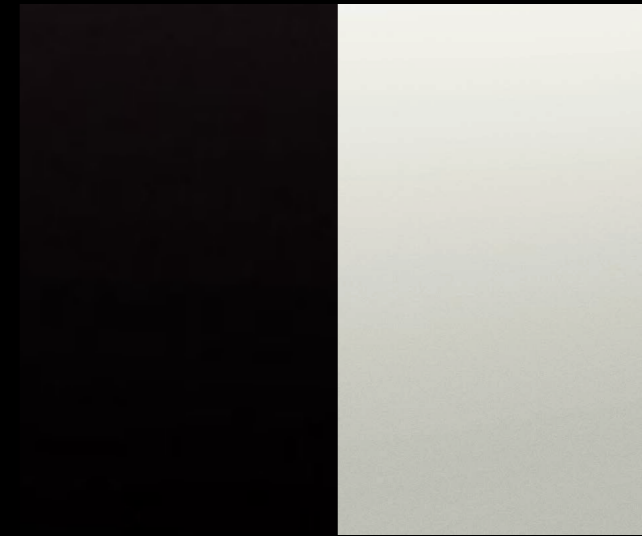
 Side Assist





The Audi A4 in Quantum Grey Metallic

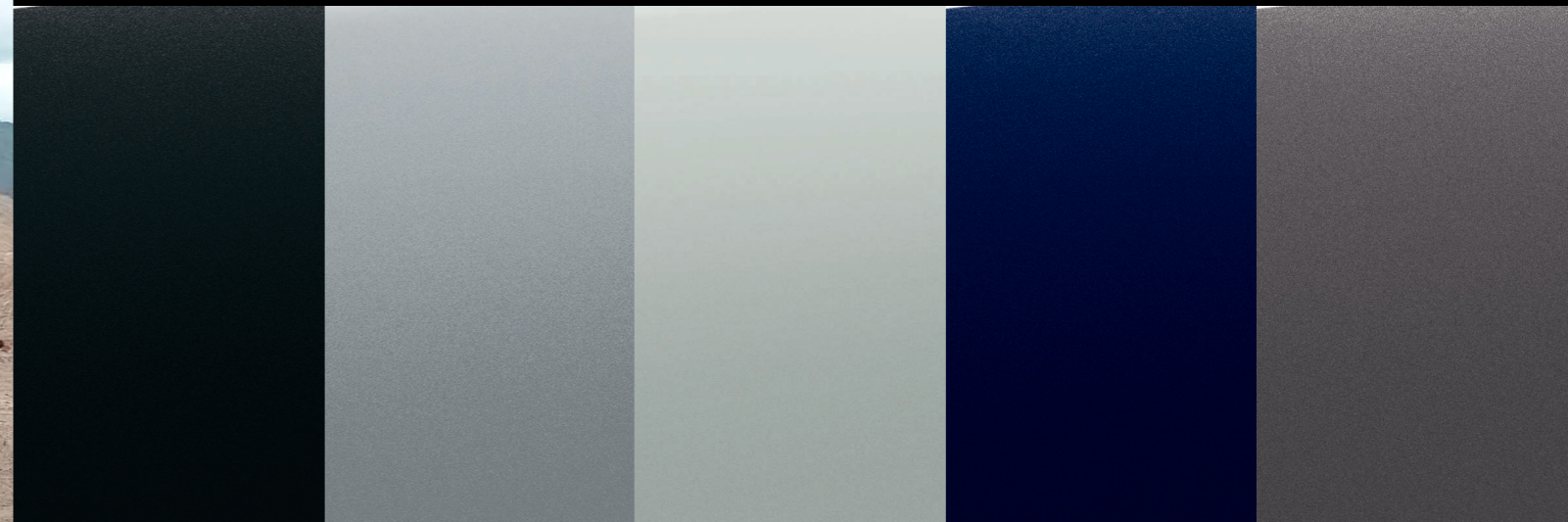
Solid



Brilliant Black

Ibis White

Metallic



Manhattan Grey

Florett Silver

Glacier White

Navarra Blue

Terra Grey



Mythos Black

Tango Red

Audi A4 Specification Comparison

Performance	A4 Front Wheel Drive	A4 quattro
Engine	Inline 4 cylinder	Inline 4 cylinder
Power Output	140 kW (190hp)	183 kW (249hp)
Torque	320Nm	370Nm
Top Speed	240km/h	250km/h
Acceleration (0 -100km/h)	7.3s	5.8s
Steering	Electromechanical steering	Electromechanical steering
Drive Type	Front Wheel Drive	quattro All Wheel Drive with ultra technology
Transmission	7 speed S tronic	7 speed S tronic
Suspension	Sports suspension	Sports suspension with damping control
Wheels	18"	19"
Fuel Consumption	5.6 - 5.9L / 100km	6.8 - 7.1L / 100km
Comfort	A4 Front Wheel Drive	A4 quattro
Keyless	•	•
Speakers	Audi Sound System	Bang and Olufsen Premium Sound System with 3D sound
Ambient lighting	30 colours	30 colours
MMI Navigation Plus with MMI touch	•	•
Audi Virtual Cockpit	•	•
Audi smartphone interface	•	•
Electric Tailgate	Convenience Opening	Convenience Opening

Driving Assistance**A4 Front Wheel Drive****A4 quattro**

Audi Pre Sense

Basic

Basic

Park Assist

•

•

Parking Aid Plus

•

•

Camera

360 surround

360 surround

Side Assist (Lane change assist)

-

•

Hold Assist

•

•

Drive Select

•

•

Safety**A4 Front Wheel Drive****A4 quattro**

Headlights

Matrix LED with dynamic light design

Matrix LED with dynamic light design

Airbags

Driver and front passenger airbag with front passenger airbag
deactivationDriver and front passenger airbag with front passenger airbag
deactivation

Side airbags in front and rear and curtain airbag system

Side airbags in front and rear and curtain airbag system

ISOFIX

ISOFIX child seat anchors for front passenger seat
and top tether for outer rear seatsISOFIX child seat anchors for front passenger seat
and top tether for outer rear seats

Spare Wheel

Space saving spare wheel

Space saving spare wheel

Tyre Pressure Monitoring System

Indirect

Indirect

For more information,
please contact

+673 7373198



Products shown on the vehicle are subject to availability